

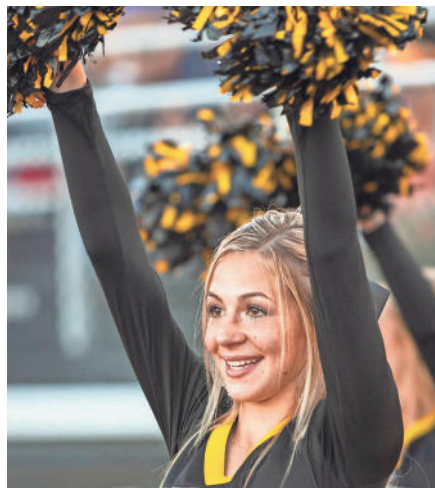
GIRLS SPORTS SPOTLIGHT



Granville Christian's Chloe Gray spikes during a Sept. 13 match against Bishop Rosecrans. SARA C. TOBIAS/THE ADVOCATE



Newark Catholic sophomore Erin Keck attempts to tip a shot past Northridge senior Gabi Smith during a Sept. 16 match. SARA C. TOBIAS/THE ADVOCATE



A Watkins Memorial cheerleader supports the Warriors during last Friday's Homecoming game against Utica. MATT BRANSON/THE ADVOCATE



Newark sophomore Cammy Arias attempts to gain possession during a Sept. 14 match against Pickerington Central. SARA C. TOBIAS/THE ADVOCATE



Licking Memorial
Urgent Care

A Department of Licking Memorial Hospital

LMHealth.org

Granville

(220) 564-7500

14 Westgate Drive,
off State Route 16

Monday – Friday: 9:00 a.m. – 8:00 p.m.

Saturday & Sunday: 9:00 a.m. – 5:00 p.m.

Closed on Holidays

Newark

(220) 564-7700

20 West Locust Street,
off Fourth Street

Monday – Saturday: 9:00 a.m. – 6:00 p.m.

Sunday: 12:00 Noon – 6:00 p.m.

Closed on Holidays

Pataskala

(220) 564-7600

One Healthy Place,
off Broad Street

Monday – Saturday: 9:00 a.m. – 6:00 p.m.

Sunday: 12:00 Noon – 6:00 p.m.

Closed on Holidays